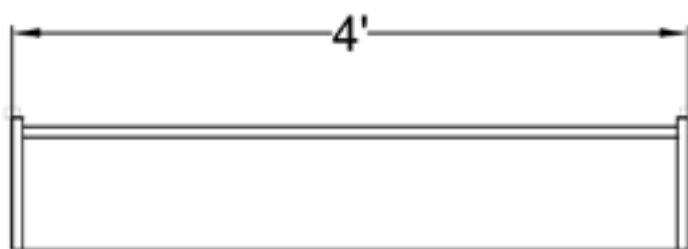
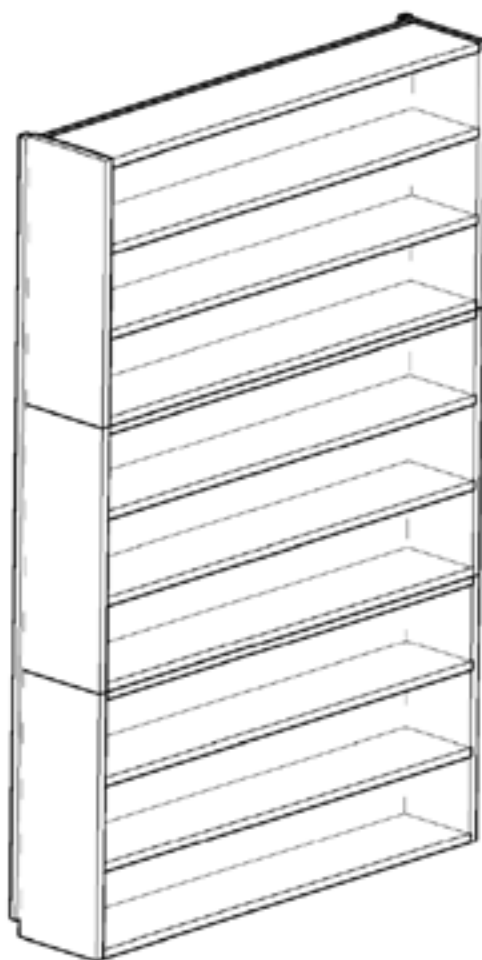


DEPARTMENT OF DEFENSE (DOD)

Joint Schedule Numbers (JSNs)



E0603



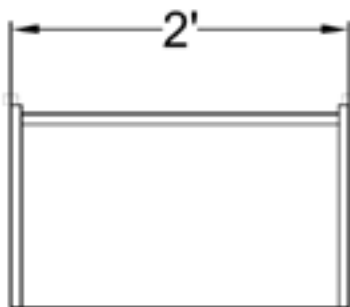
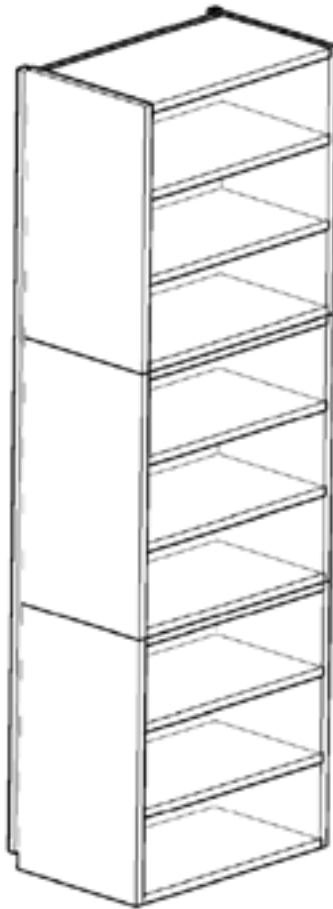
QTY	DESCRIPTION
2	Vertical Hanging Strips
3	3 Shelf Unit

Department of Defense
Pharmacy Typicals

EO603



E0606



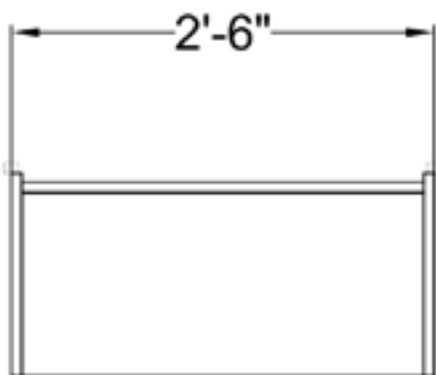
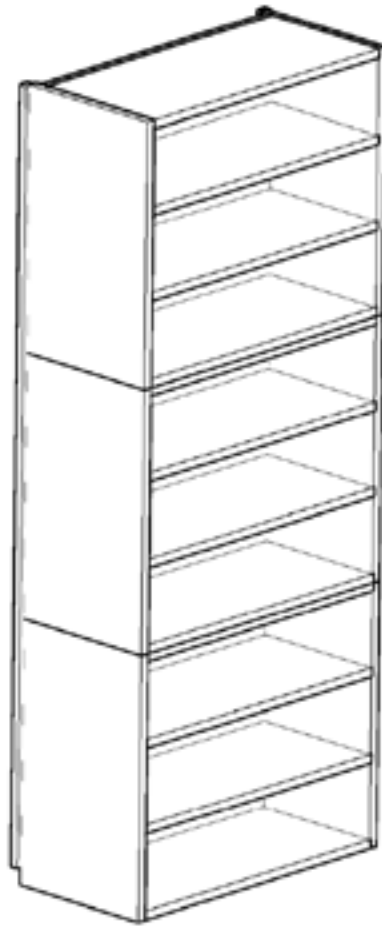
QTY	DESCRIPTION
2	Vertical Hanging Strips
3	3 Shelf Unit

Department of Defense
Pharmacy Typicals

EO606



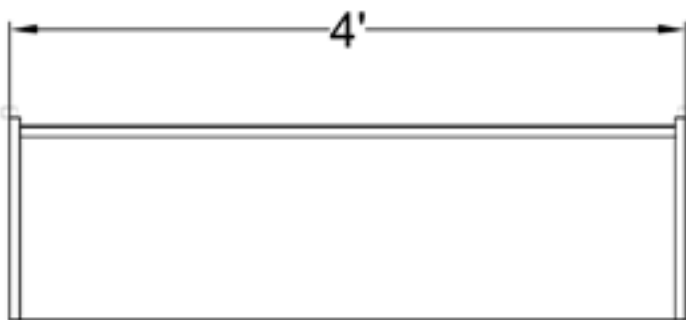
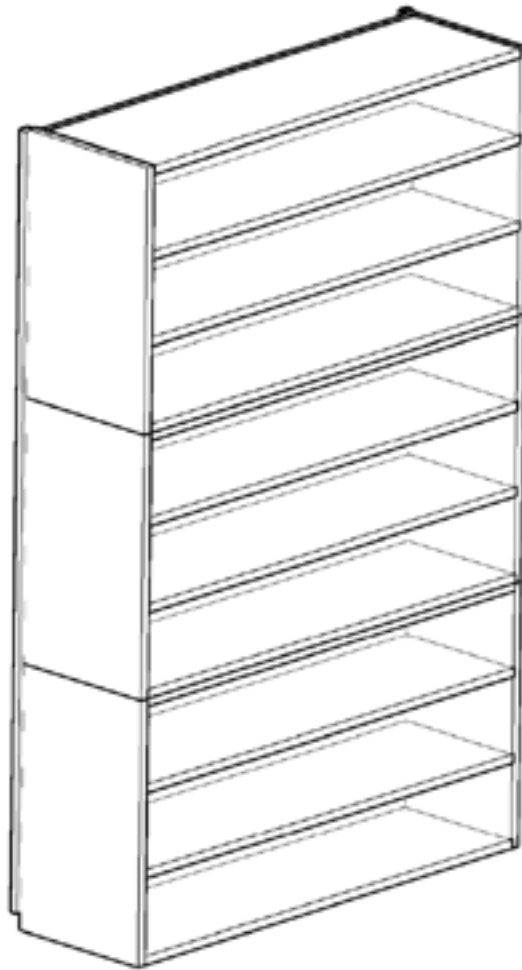
E0609



QTY	DESCRIPTION
2	Vertical Hanging Strips
3	3 Shelf Unit



E0612



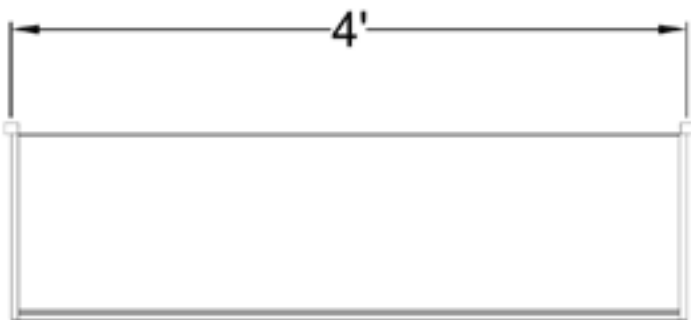
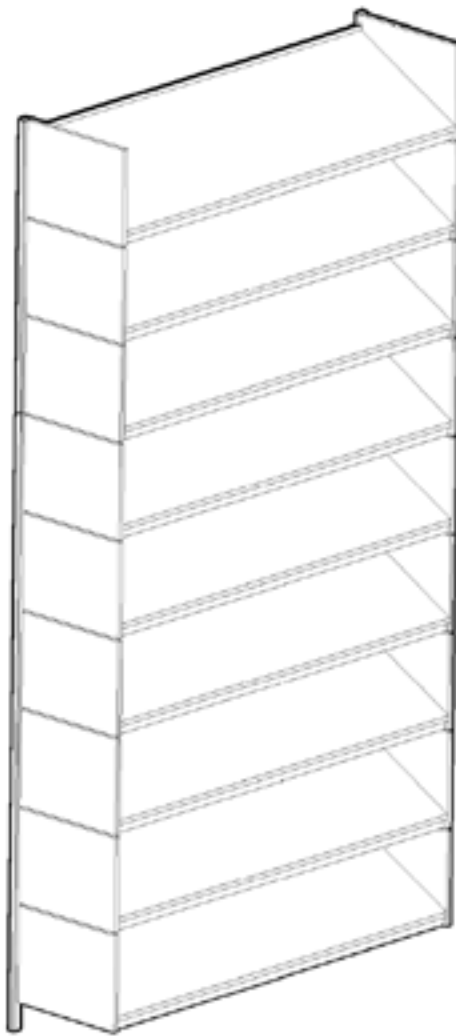
QTY	DESCRIPTION
2	Vertical Hanging Strips
3	3 Shelf Unit

Department of Defense
Pharmacy Typicals

EO612



E0615



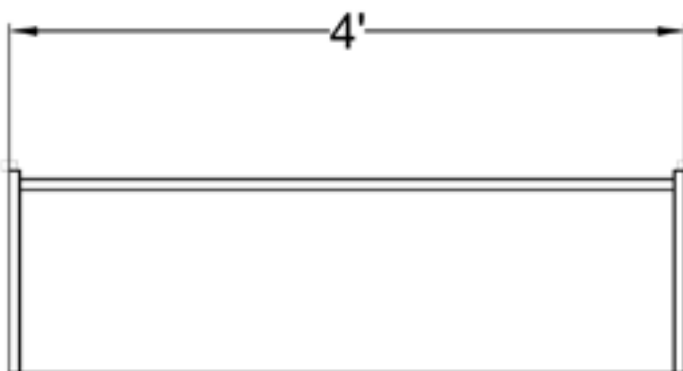
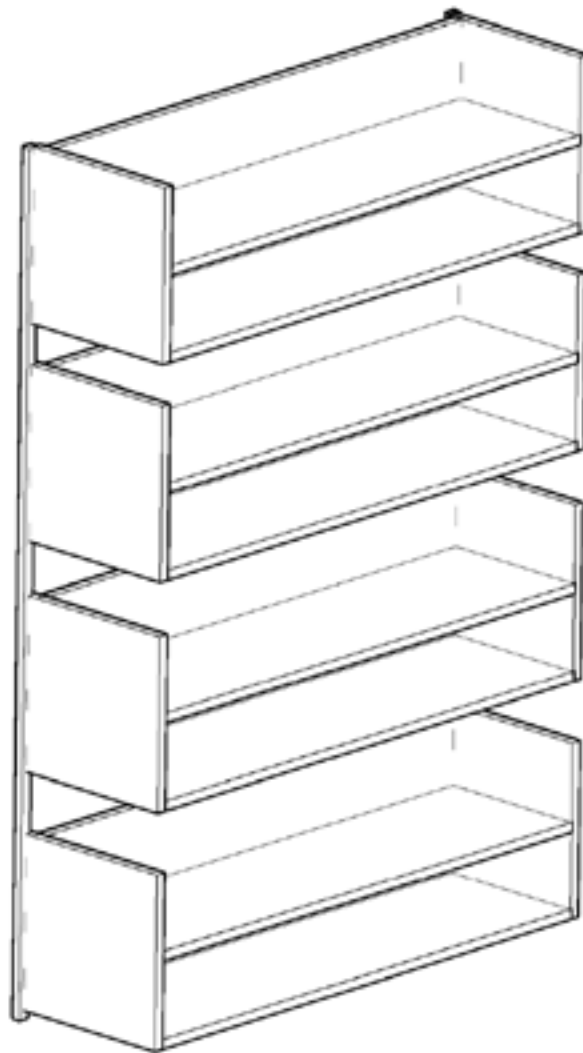
QTY	DESCRIPTION
2	Vertical Hanging Strips
9	Shelf, Storage/Display

Department of Defense
Pharmacy Typicals

EO615

E0618





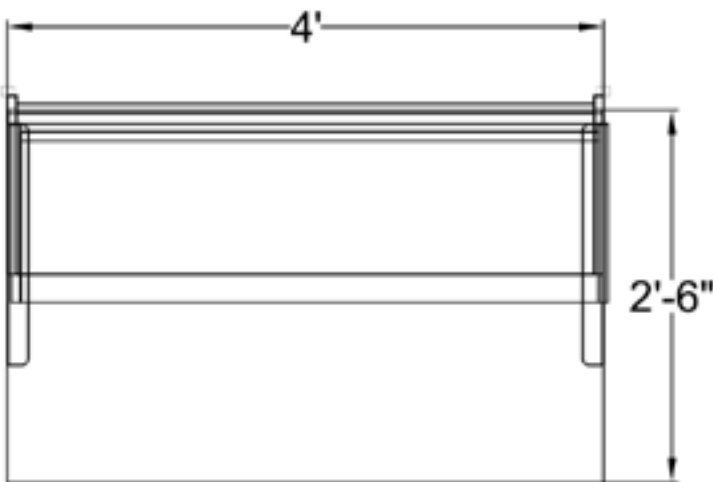
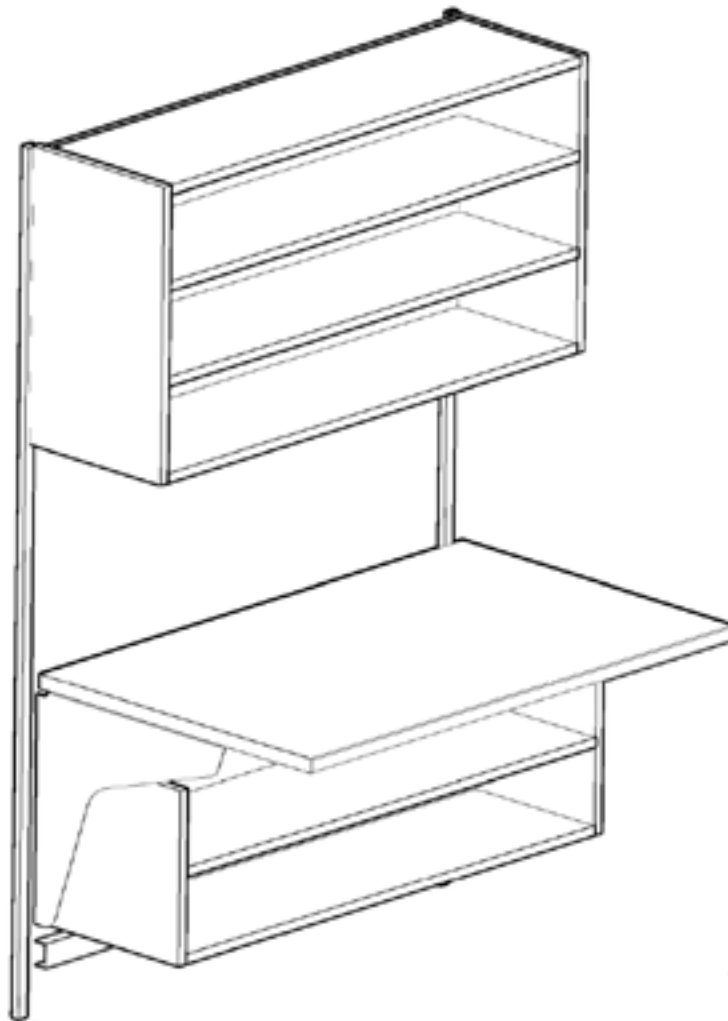
QTY	DESCRIPTION
2	Vertical Hanging Strips
4	Extra Deep Shelf

Department of Defense
Pharmacy Typicals

EO618

E0624





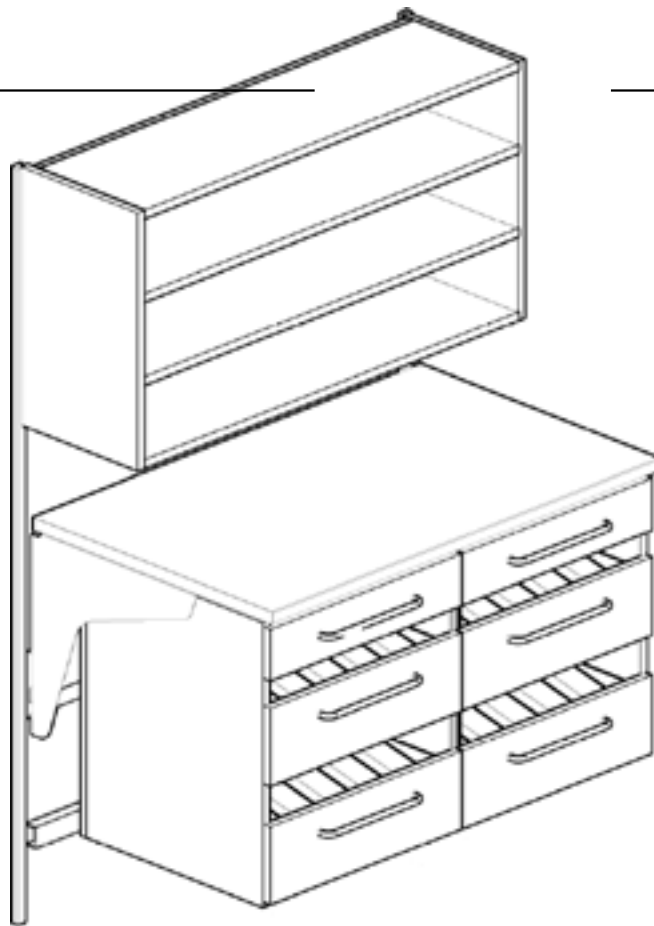
QTY	DESCRIPTION
2	Vertical Hanging Strips
1	3 Shelf Unit
1	Cantilevered Work Surface
1	Extra Deep Shelf

Department of Defense
Pharmacy Typicals

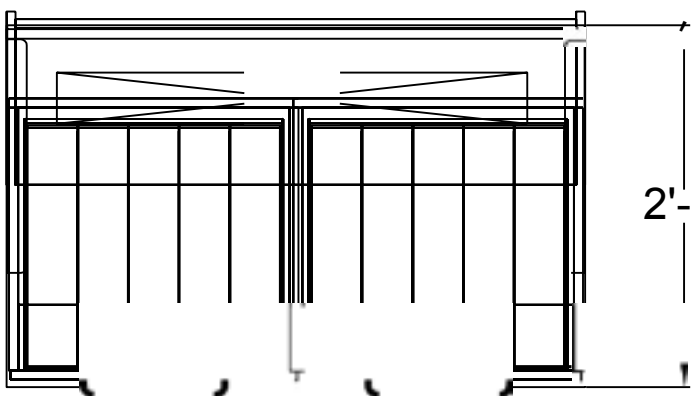
EO624

E0627





4'

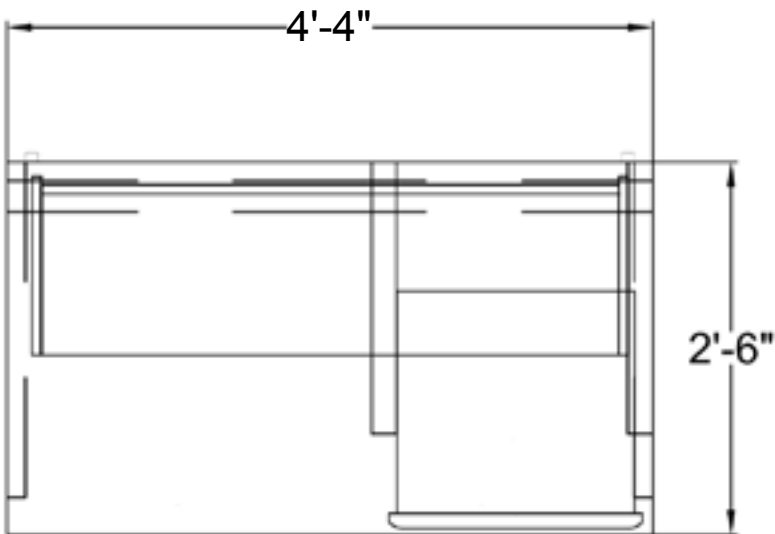
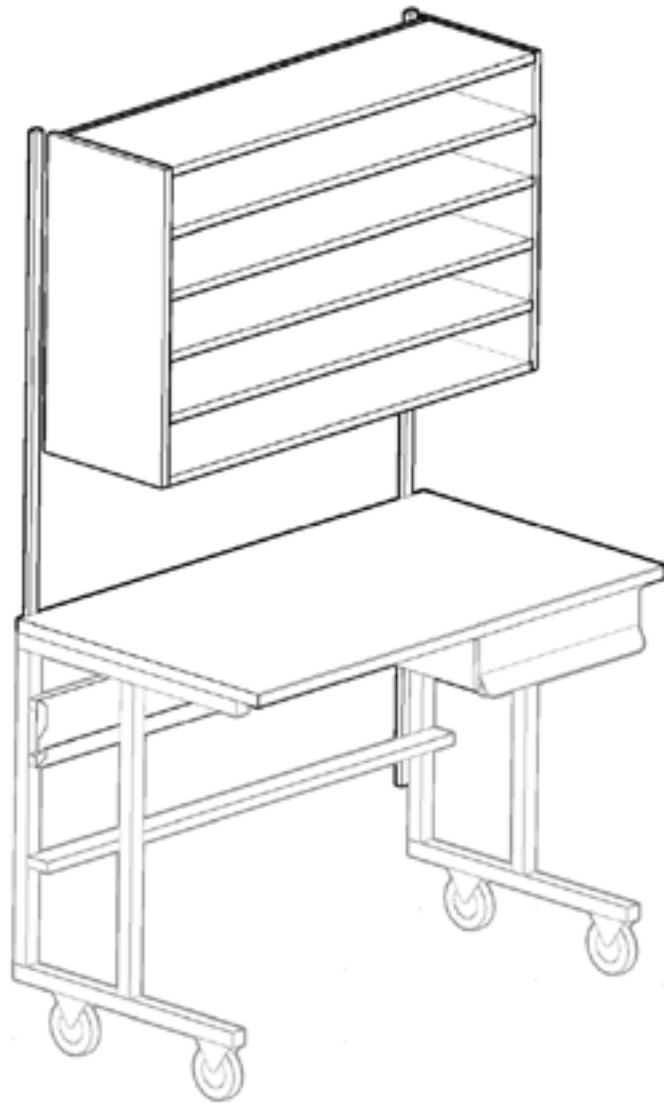


2'-6"

<u>QTY</u>	<u>DESCRIPTION</u>
2	Vertical Hanging Strips
1	3 Shelf Unit
1	Light
1	Cantilevered Work Surface
2	Storage Cabinet
6	Drawer



E0630



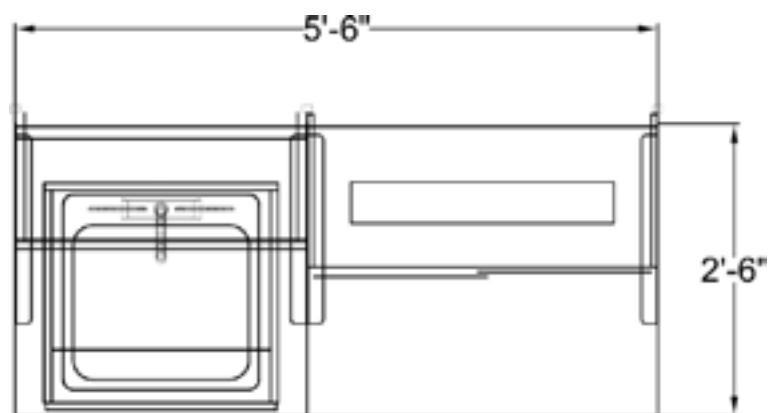
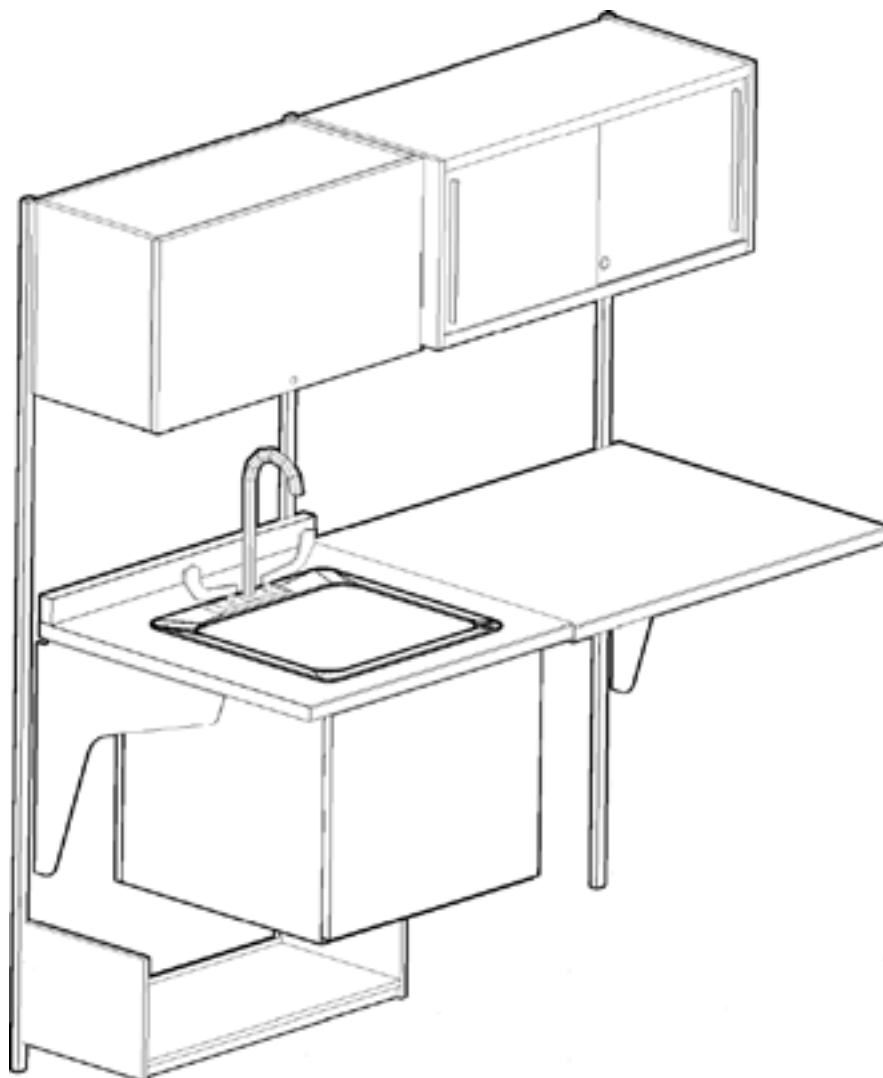
QTY	DESCRIPTION
2	Vertical Hanging Strips
1	5 Shelf Unit
1	Freestanding WorkSurface
1	Drawer

Department of Defense
Pharmacy Typicals

EO630

E0633





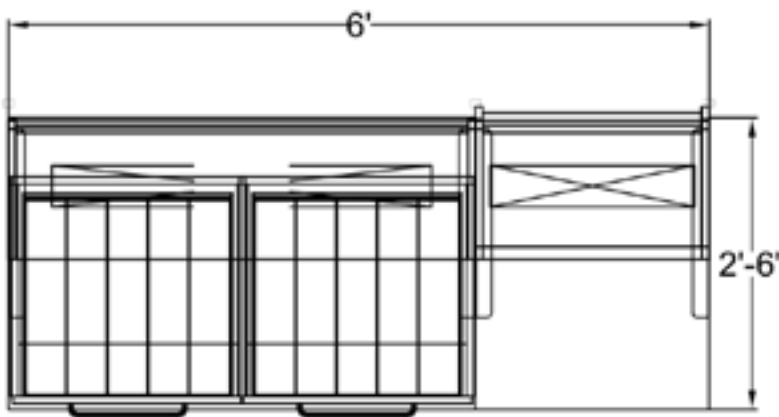
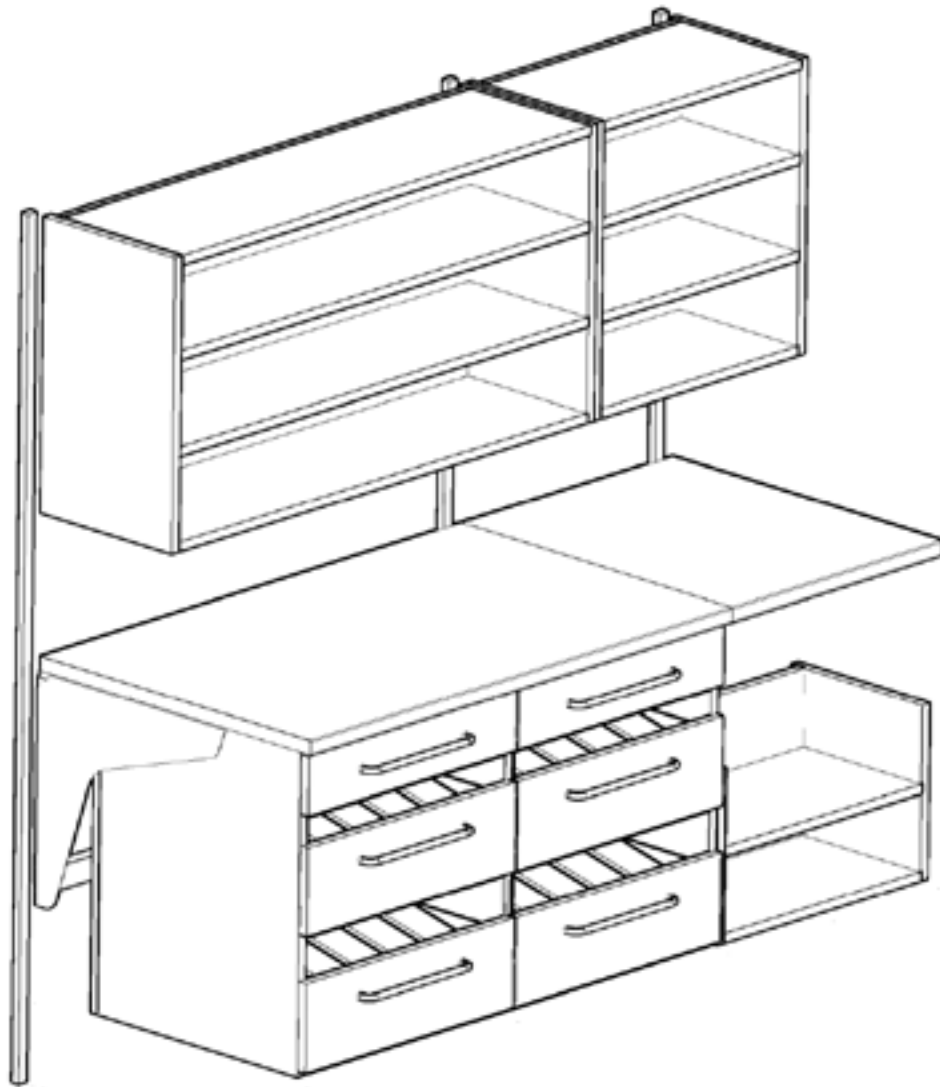
<u>QTY</u>	<u>DESCRIPTION</u>
3	Vertical Hanging Strips
1	Lockable Flipper Unit
1	Cabinet with Doors
1	Light
1	Cantilevered Work Surface
1	Cantilevered Adaptable Sink
	Work Surface w/ Phenolic Top
1	Extra Deep Shelf
1	Sink and Faucet

Department of Defense
Pharmacy Typicals

EO633

E0636





QTY	DESCRIPTION
3	Vertical Hanging Strips
2	3 Shelf Unit
2	Cantilevered Work Surface
2	Storage CObinet
6	Drawer
2	Shelf, Storage Display
2	Light

Department of Defense
Pharmacy Typicals

EO636

E0639



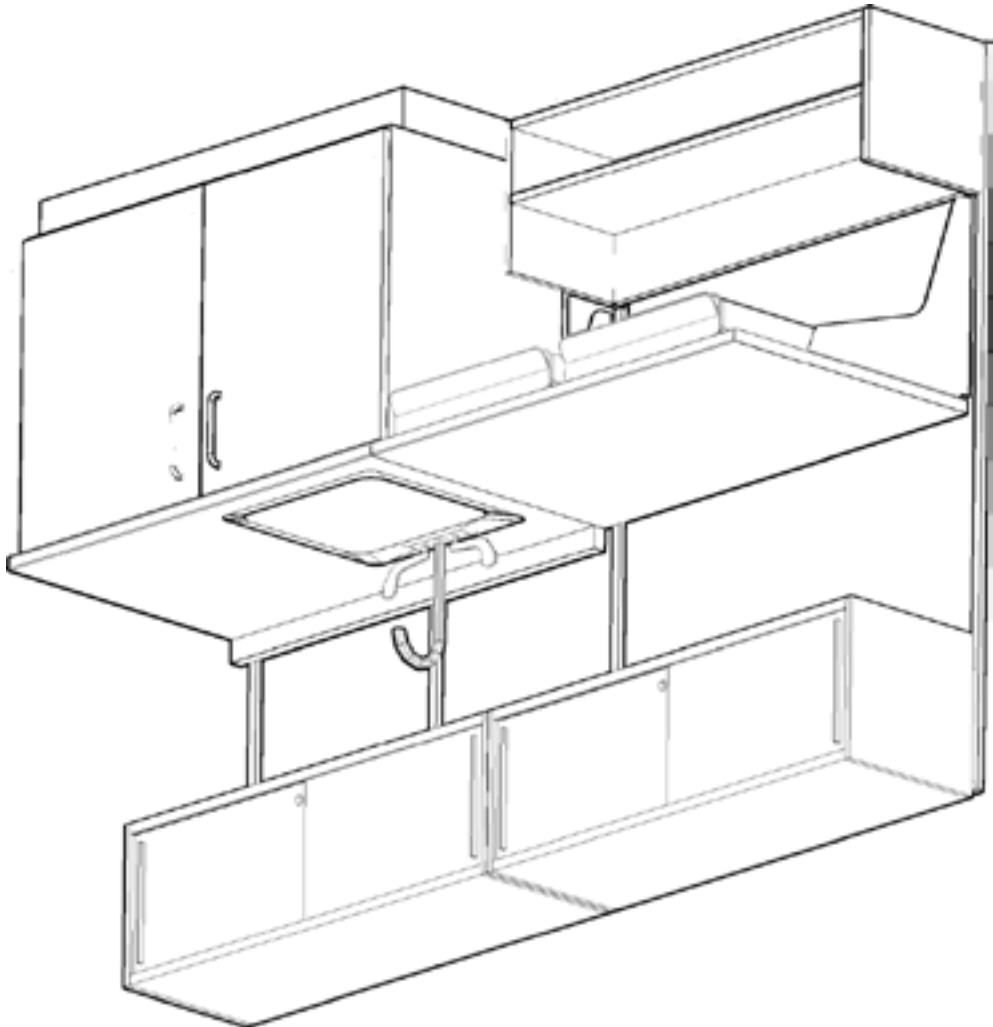
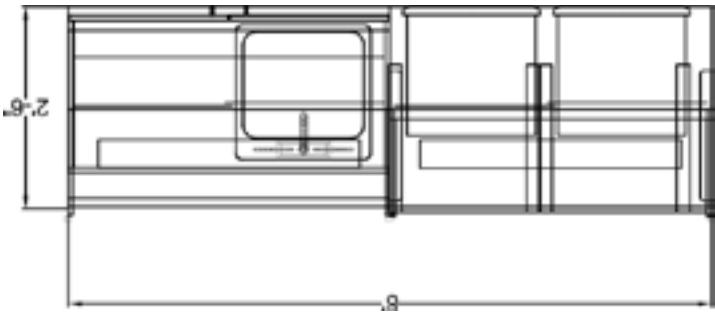
6S9OZ

S | D*!dXğXCDLLJJDL]g
OSUO}O@ }O }UO1}JDdag

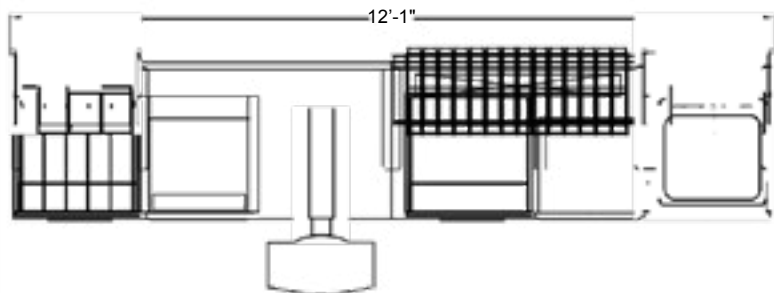
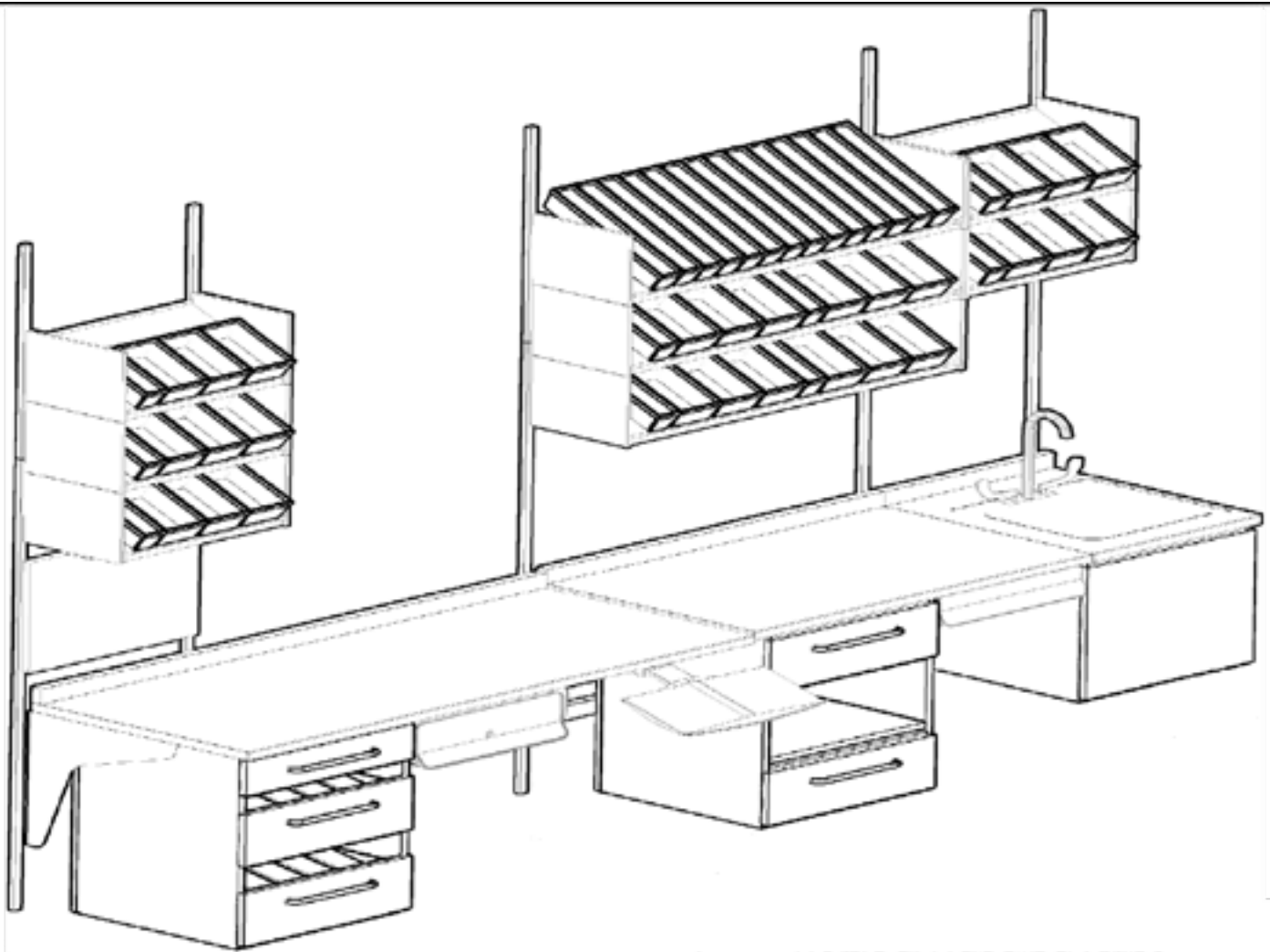
Sink and Faucet 1
Drawer 2
Extra Deep Shelf 2
do}•!iouagg

/7vt L]sD Ğls/OD§ /u jau!qDc
a qDjdD[D@ DU!pUD{SaOJg
DOD]JMy q(o/y\ pa(••+!juDy

sJoognt!••jau!qDc 2
• is •u!•uDH Dciyağ 3
NOI1dldGSZO 11L







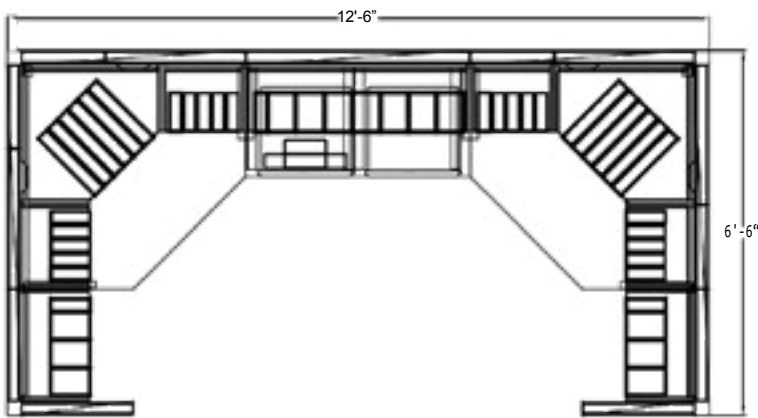
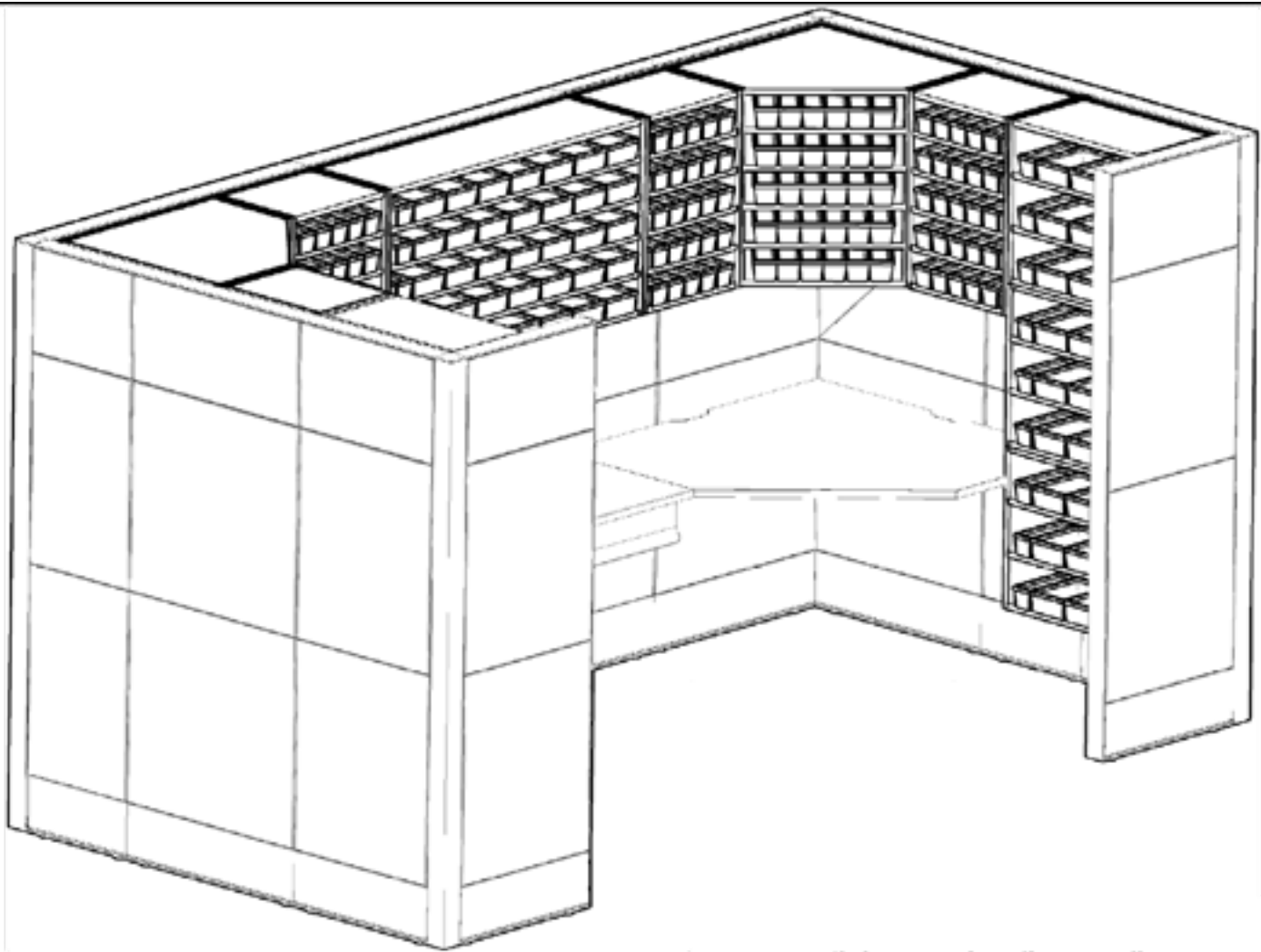
- 3 vertical hanging strips
- 8 Shelf, Storage/Display
- 89 Bins
- 1 Tackboard
- 2 Light
- 2 Cantilevered Work Surface w/ Backsplash
- 1 Cantilevered Adaptable Sink Work Surface w/ Backsplash w/ Phenolic Top
- 2 Drawer
- 1 Adjustable Keyboard Tray
- 2 Storage Cabinet
- 5 Drawer
- 1 Sink and Faucet

Department of Defense
Pharmacy Typicals

EO645



E0648



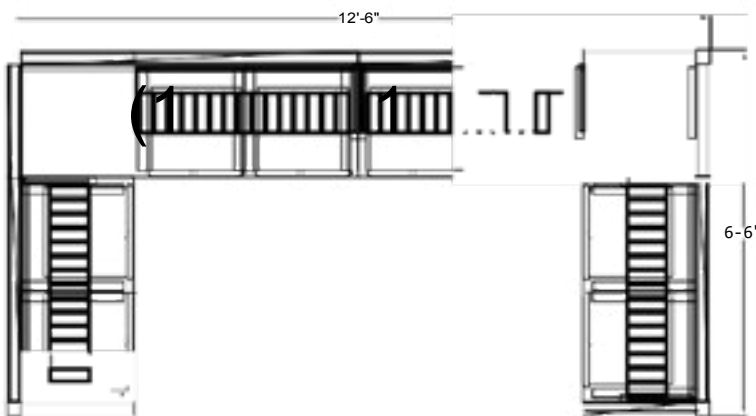
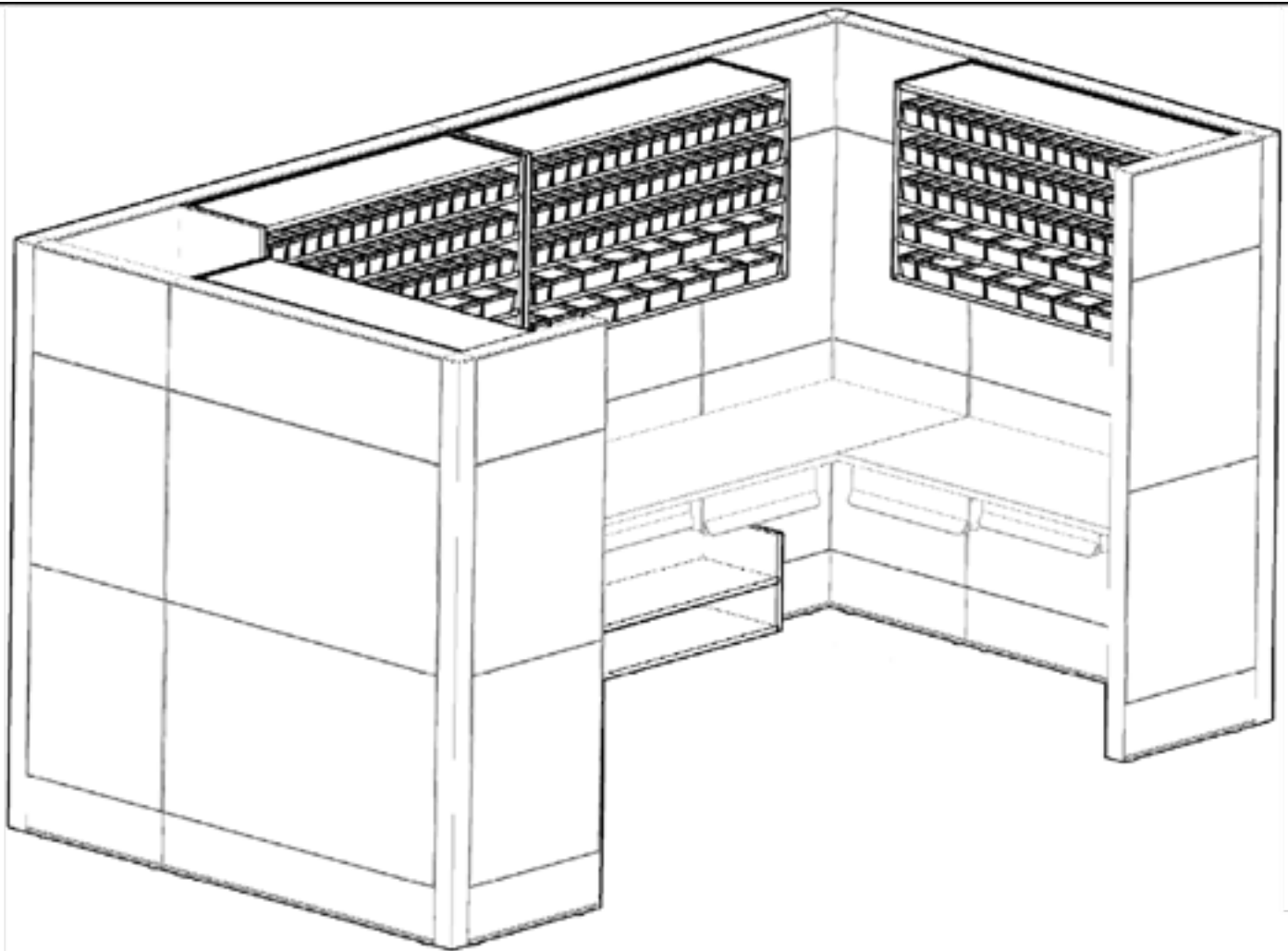
- 12 Solid Panel 85"H x 24"W
- 1 Solid Panel 85"H x 48"W
- 4 Panel Connector, 2-way Corner
- 8 Panel to Panel Connector
- 2 Finished End Hardware
- 2 Cantilevered Corner Work Surface
- 1 Cantilevered Work Surface
- 6 3 Shelf Unit
- 1 5 Shelf Unit
- 2 Corner 5 Shelf Unit
- 2 Drawer
- 430 Bins

Department of Defense
Pharmacy Typicals

EO648



E0651



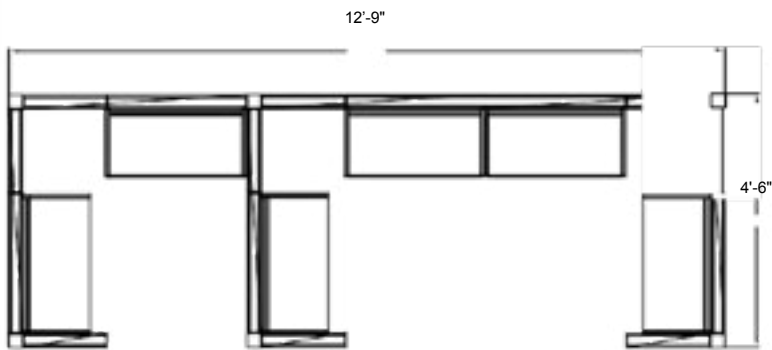
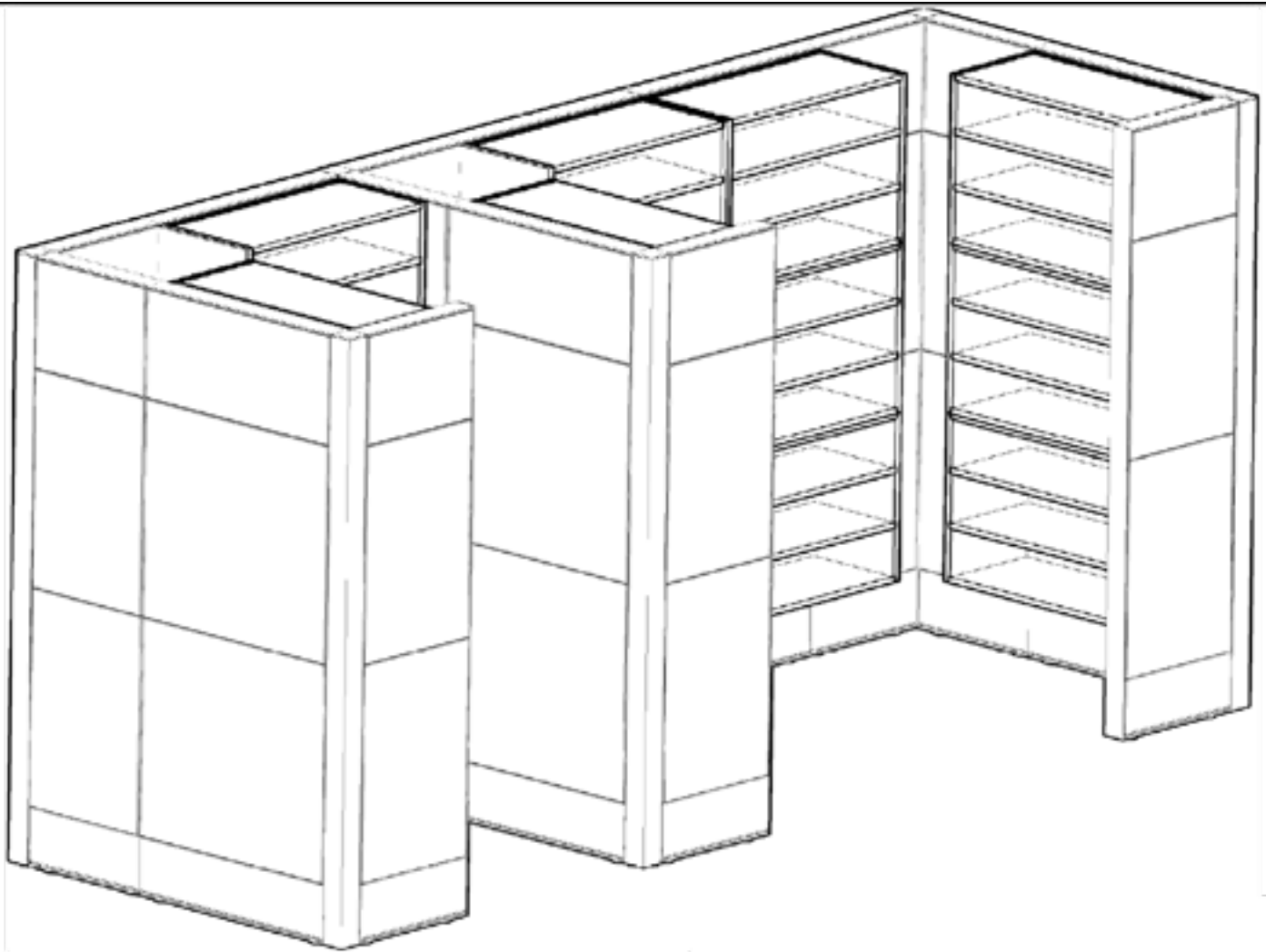
- 6 Solid Panel 85"H x 24"W
- 4 Solid Panel 85"H x 48"W
- 4 Panel Connector, 90 Degree Corner
- 5 Panel to Panel Connector
- 2 Finished End Hardware
- 2 Extra Deep Shelf w/ Add-On
- 4 Cantilevered Work Surface
- 20 Dispensing Rails, 48"W
- 320 Bins
- 8 Drawer

Department of Defense
Pharmacy Typicals

EO651



E0657



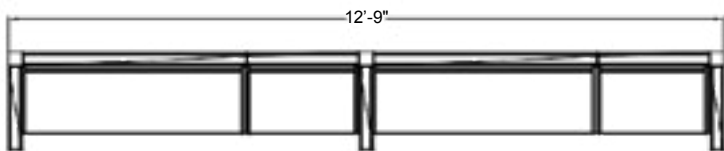
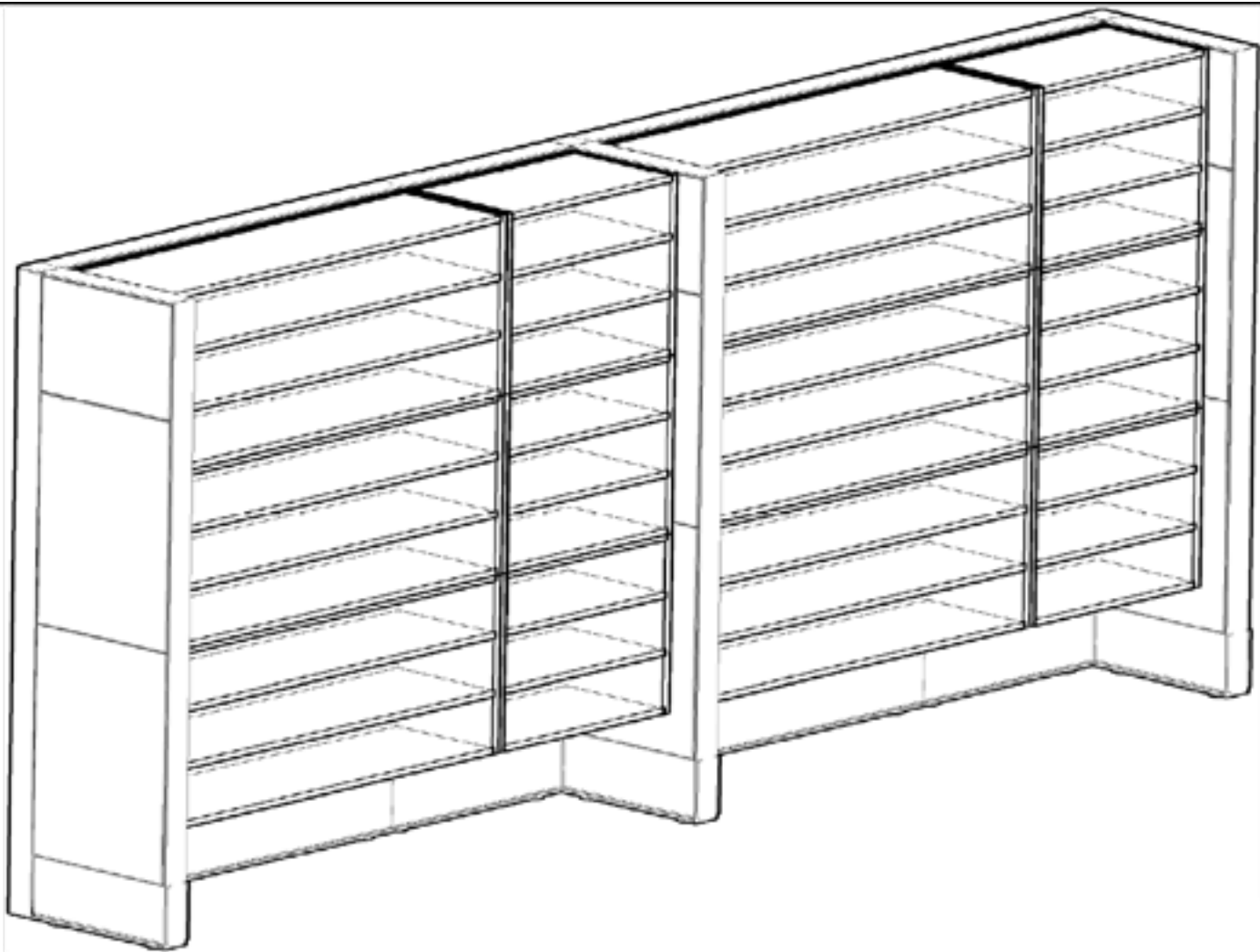
- | | |
|---|-------------------------------|
| 3 | Solid Panel 85"H x 24"W |
| 6 | Solid Panel 85"H x 48"W |
| 5 | Panel Connector, 2-Way Corner |
| 1 | Panel Connector, 3-Way Corner |
| 1 | Panel to Panel Connector |
| 3 | Finished End Hardware |
| 3 | 9 Shelf Unit |

Department of Defense
Pharmacy Typicals

EO657



E0660



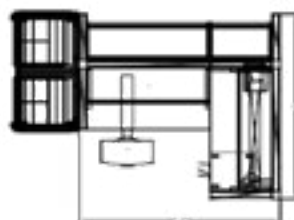
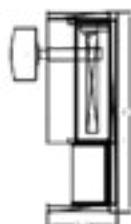
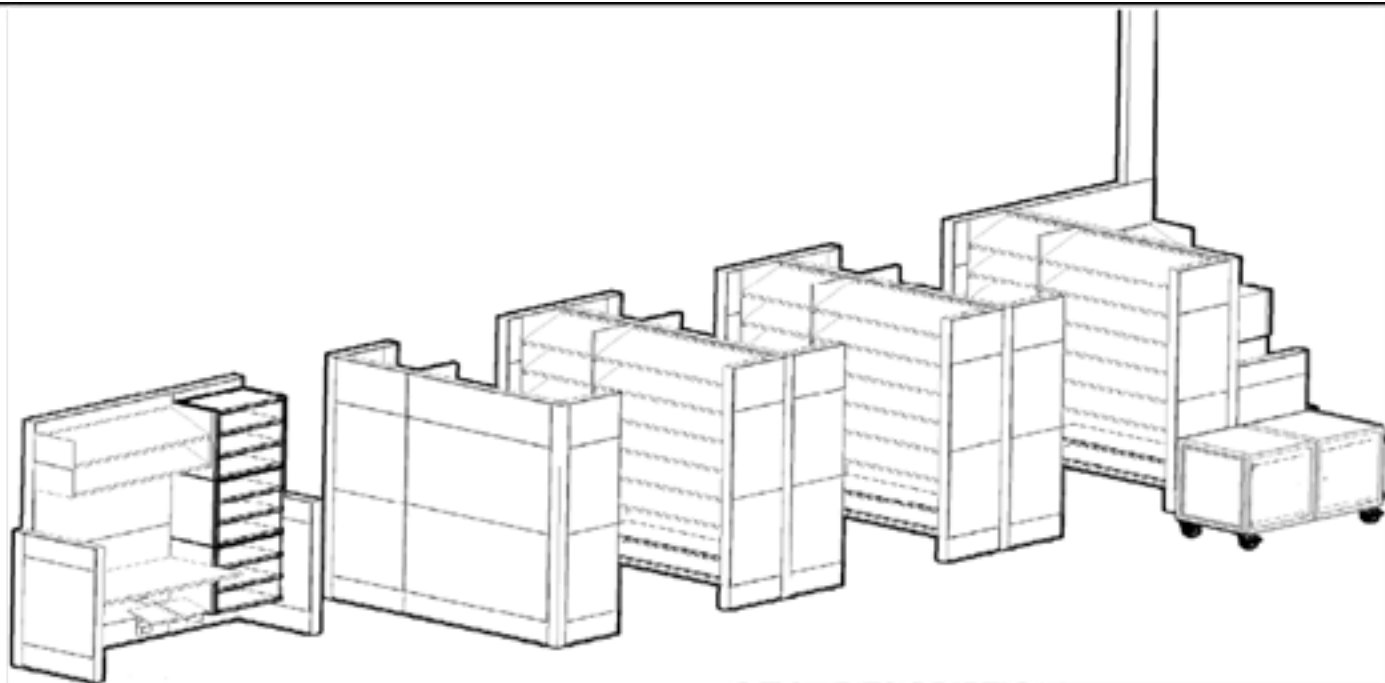
- | | |
|---|-------------------------------|
| 3 | Solid Panel 85"H x 18"W |
| 2 | Solid Panel 85"H x 24"W |
| 2 | Solid Panel 85"H x 48"W |
| 2 | Panel Connector, 2-Way Corner |
| 1 | Panel Connector, 3-Way Corner |
| 2 | Panel to Panel Connector |
| 3 | Finished End Hardware |
| 6 | 3 Shelf Unit, 24"W |
| 6 | 3 Shelf Unit, 48"W |

Department of Defense
Pharmacy Typicals

EO660

E0665





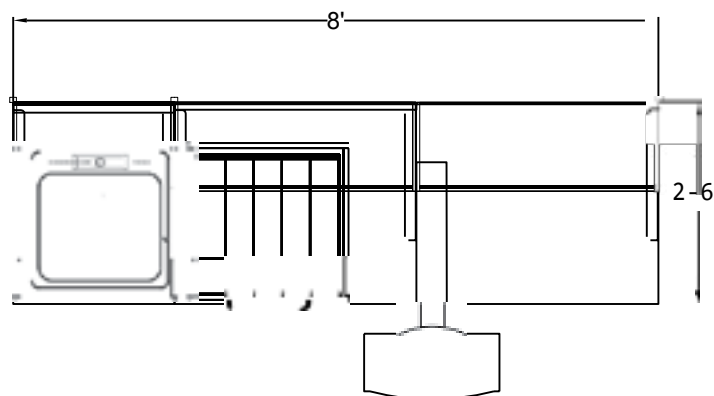
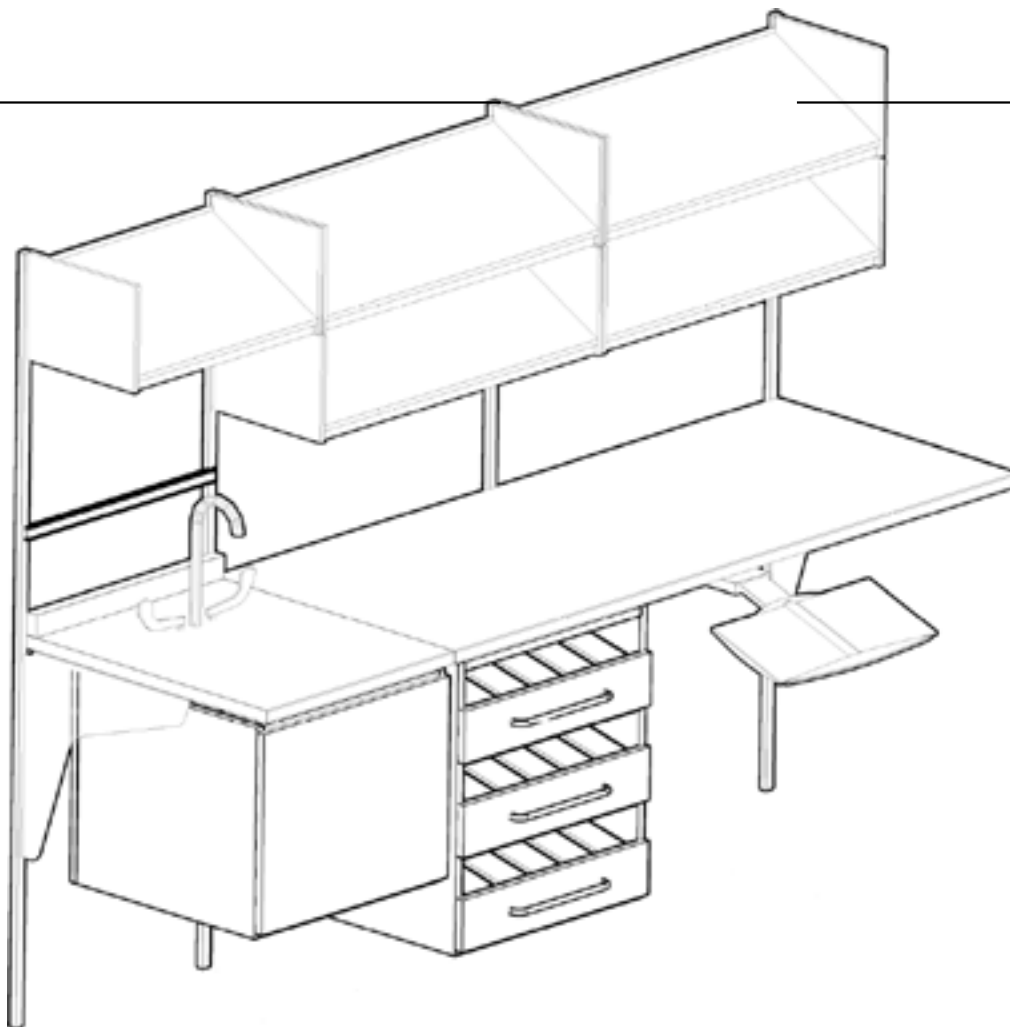
QTY	DESCRIPTION
4	Panel, Hard Npwr 53"H x 24"W
12	Panel, Hard Npwr 85"H x 18"W
4	Panel, Hard Npwr 85"H x 24"W
5	Panel, Hard Npwr 85"H x 48"W
1	Open Panel Frame, Npwr 85"H x 24"W
1	Open Panel Frame, Npwr 85"H x 48"W
4	Conn, 2-Way 90 Degree Hard
7	Conn, 3-Way 90 Degree Hard
1	Duplex Rcp, 6/Pkg
1	Duplex Rcp, Dedicated 6/Pkg
1	Ceiling Pwr Entry, Pwr 85"H
2	Wk Surf, Lam
36	Shelf, Storage Display 24"W
40	Shelf, Storage Display 48"W
1	Flip Dr Unit, Fab, w/ Lock
1	Tackboard
1	Slat Pad
1	Cantilevered Work Surf, 24"D
6	Shelf 24"W
6	Shelf 48"W
6	Shelf, Add-On 24"W
6	Shelf, Add-On 48"W
3	Shelf Unit, 3 Shlvs 24"W
2	Storage Cabinets
1	Mobile Ped, F/F
2	Task Light
1	Diagonal Tray
2	Keyboard Tray, Fully Adjustable

Department of Defense
Pharmacy Typicals

E0665



E0666



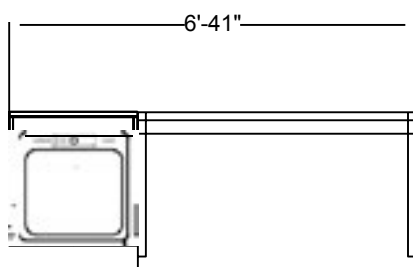
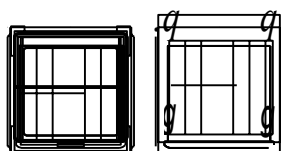
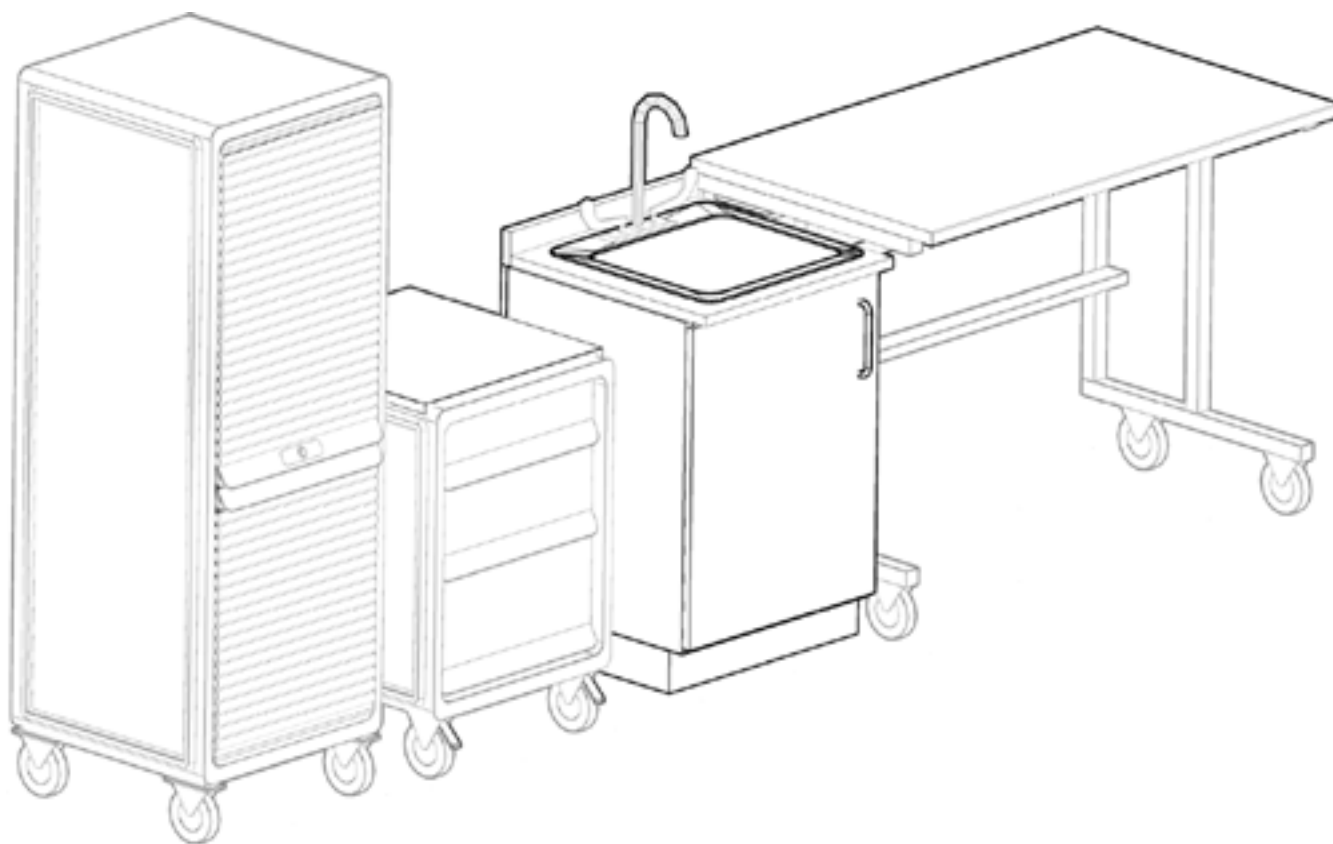
<u>QTY</u>	<u>DESCRIPTION</u>
4	Vertical Hanging Strip
5	Shelf, Storage/Display
1	Equipment Rail
1	Adapter Rail
1	Cantilevered Worksurface
1	Cantilevered Adaptable Sink
1	Work Surface w/ Backsplash w/ Phenolic Top
1	Storage Case
3	Drawer
1	Adjustable Keyboard Tray
1	Sink and Faucet

Department of Defense
Pharmacy Typicals

E0666

E0668





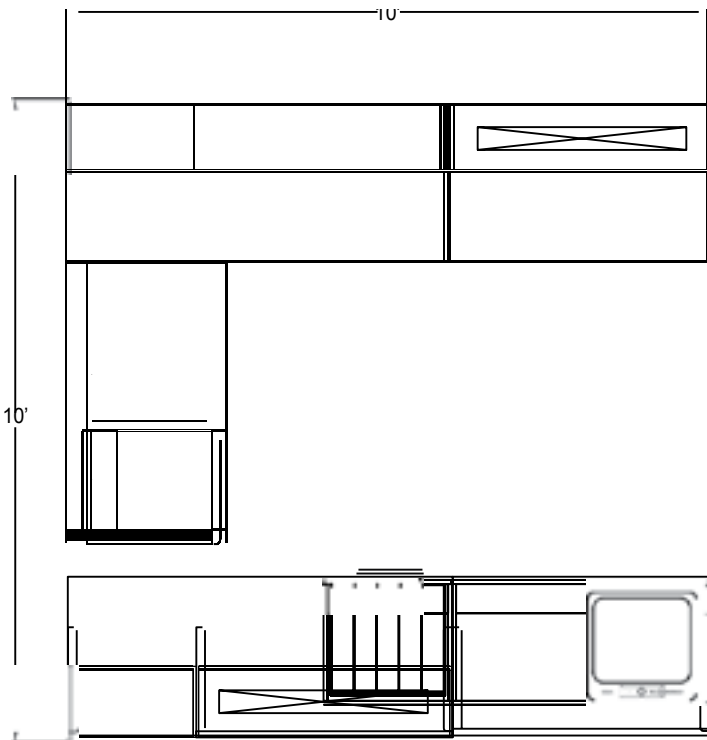
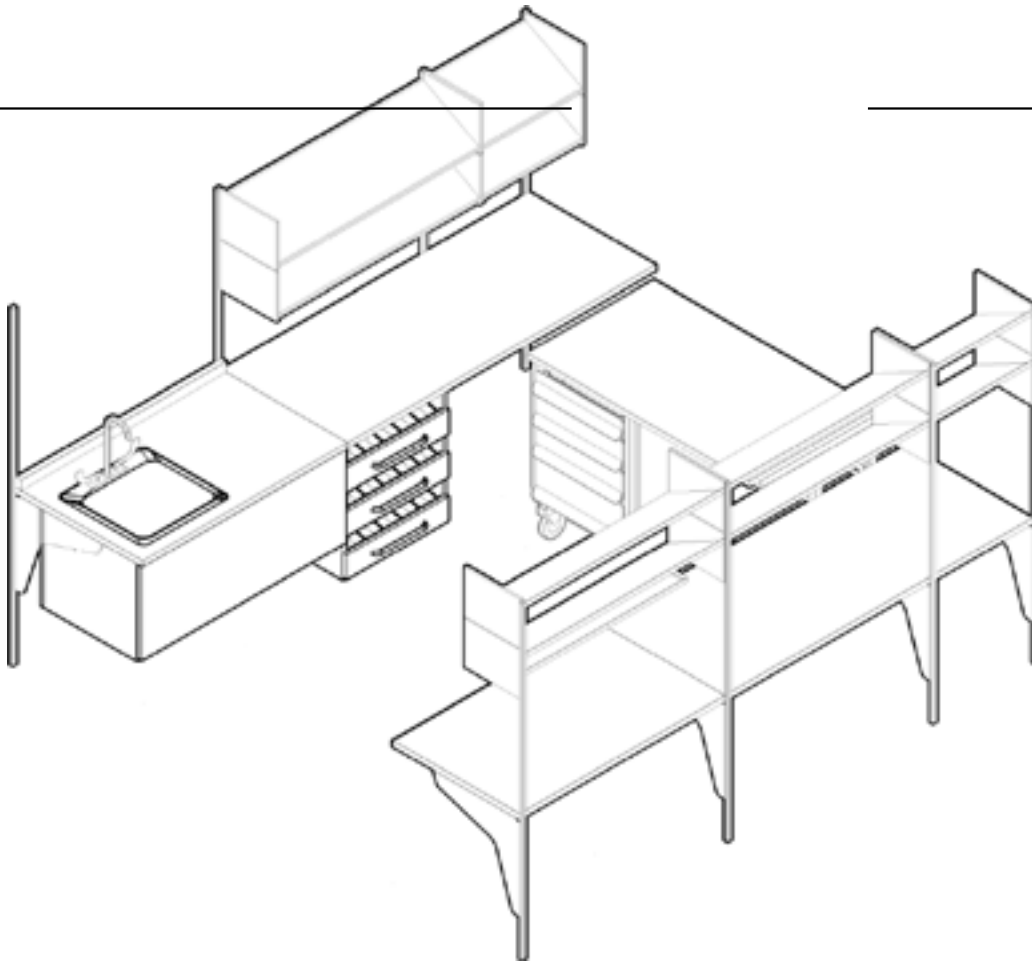
<u>QTY</u>	<u>DESCRIPTION</u>
1	Table on Casters
1	Freestanding Adaptable Sink and Cabinet w/ Backsplash w/ Phenolic Top
1	Storage Frame
3	Drawer
1	Locker on Wheels w/ Door
3	Wire Shelf
1	Sink and Faucet

Department of Defense
Pharmacy Typicals

E0668



E0674



QTY	DESCRIPTION
8	Vertical Hanging Strips
10	Shelf, Storage/Display
1	Adapter Rail
3	Cantilevered Work Surface
1	Cantilevered Adaptable Sink Work Surface w/ Backsplash w/ Phenolic Top
1	Table on Casters
1	Storage Case
3	Drawer
1	Storage Frame
4	Drawer
2	Task Light
1	Sink and Faucet

Department of Defense
Pharmacy Typicals

E06Z4